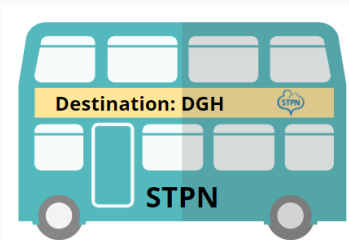




April 2022 Network Update

The STPN weekly surge updates will now be replaced by a monthly Network Newsletter which will include the latest information and resources that are available to support local planning and provision of clinical care. We will also provide updates regarding STPN work in progress, educational resources and future planning. Don't forget to take a look at our website www.stpn.uk for more detailed information.



We're coming to visit you hopefully in June! Our aim at these **informal** visits is to present our work to teams within your DGH and hopefully get the grand tour to get know your teams and facilities better.

An email will be going to all Paediatric Clinical Directors/Leads in DGHs soon. We would like your help to agree a date for these meetings and get them into calendars. Managers and Clinicians all welcome to attend.

We're expanding our team!

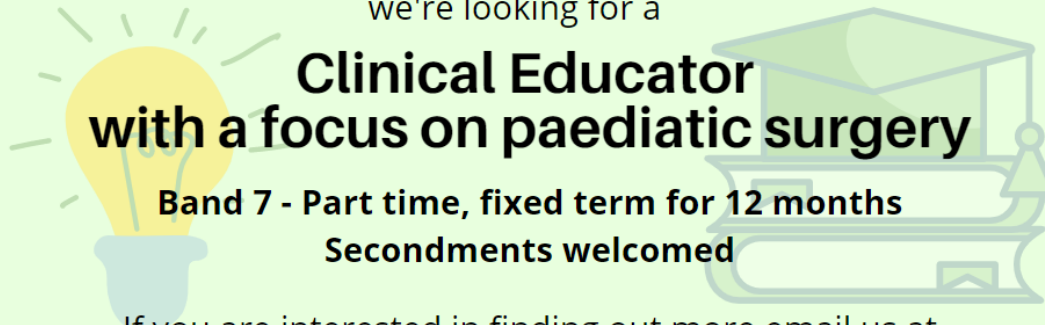
we're looking for a

**Clinical Educator
with a focus on paediatric surgery**

Band 7 - Part time, fixed term for 12 months

Secondments welcomed

If you are interested in finding out more email us at
england.stpn@nhs.net



STPN Dashboard and Data

All providers across the region are now able to contribute their demand and capacity data. This is a great achievement! Please encourage your teams to complete the dashboard daily as this data feeds into other reports for South and Pan London regions and enables us to understand the flow and needs across the system as a whole.

If anyone would like an individualised report on any aspect of the data or has a query please let us know at england.stpn@nhs.net

Thank you for your ongoing support!

Figure 1: General Paediatric Beds occupied (Jan – April 2022)

Following a small rise in the number of occupied beds and children with respiratory infection in March there has been a downward trend in April, hopefully a reflection of normal seasonal patterns returning. Despite the national and international reports of a rise in cases of acute hepatitis in children (see information below) this has not been noted in the South Thames region.

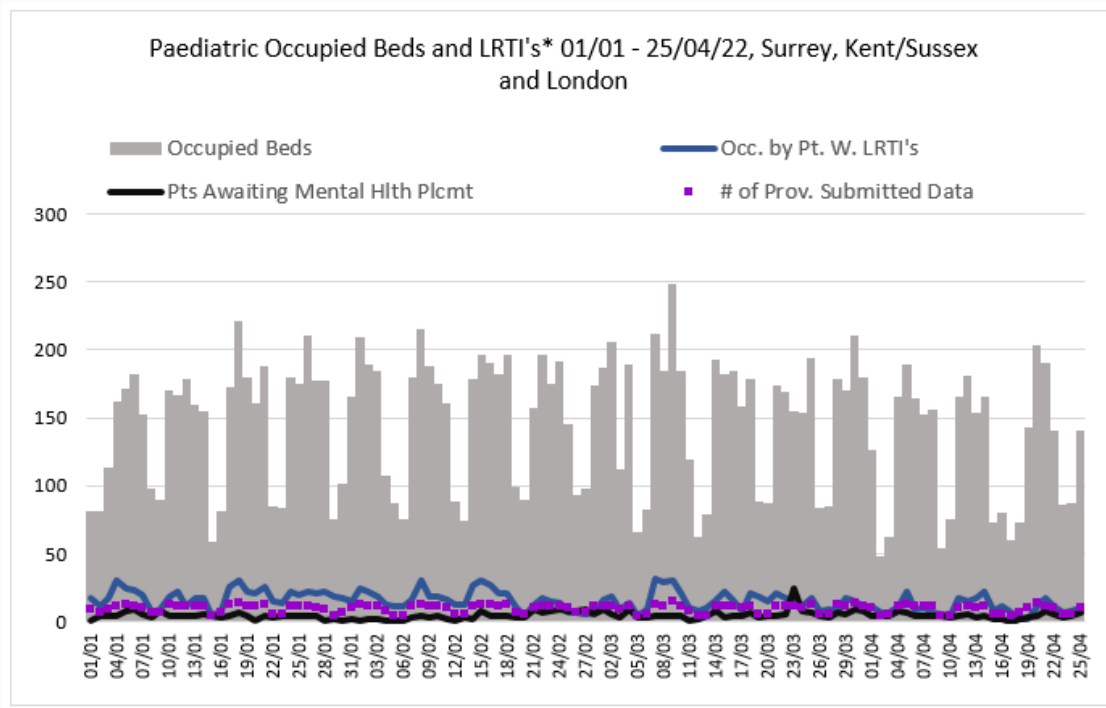


Figure 2: Paediatric Critical Care beds occupied (Jan – April 2022)

The number of occupied PCC beds in the region has fluctuated dramatically in April - from 21 beds (43% of capacity) to 46 (95% of capacity) with no discernible trend.

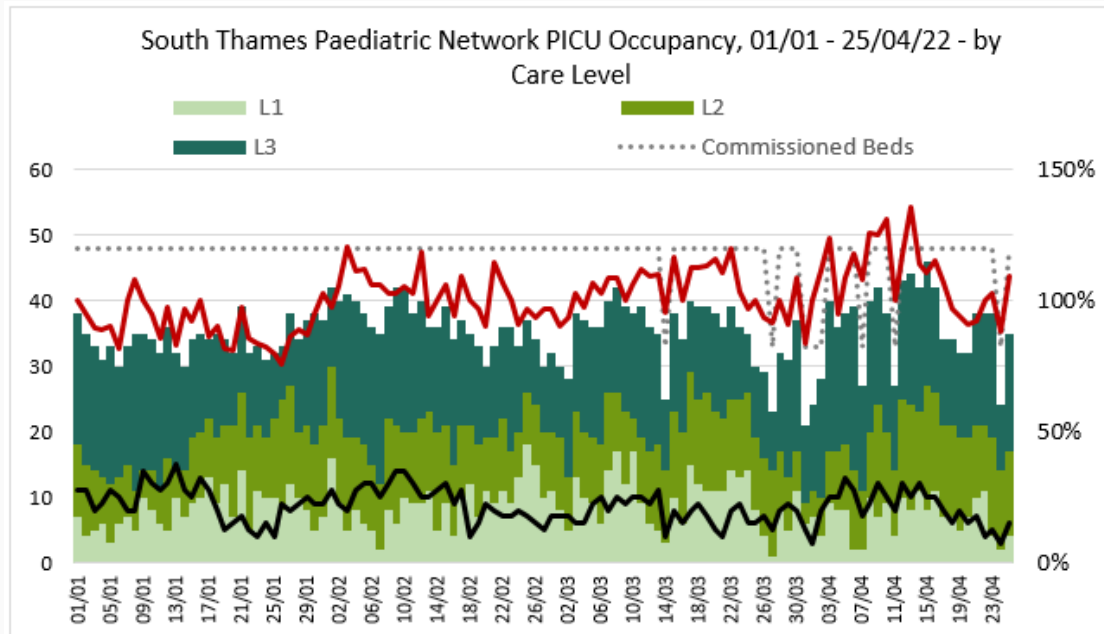
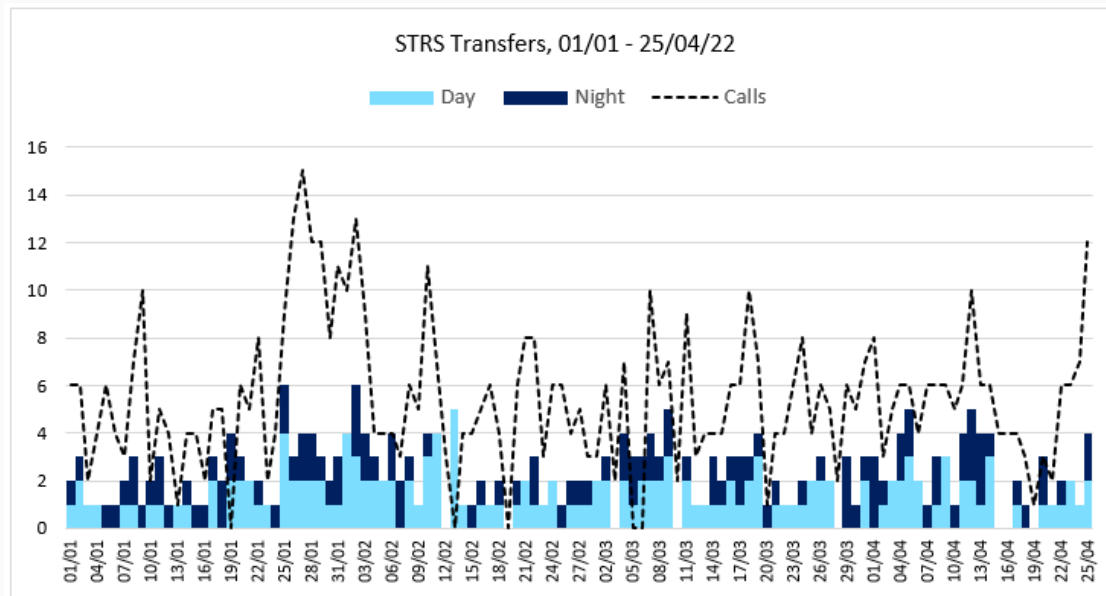


Figure 3: South Thames Retrieval Service (STRS) calls and transfers (Jan - April 2022)

Similar to the PCC occupancy the number of calls and retrievals in April has ranged from 1-12 and 0-5 respectively in a 24 hour shift.



Infection update: Acute Hepatitis in children

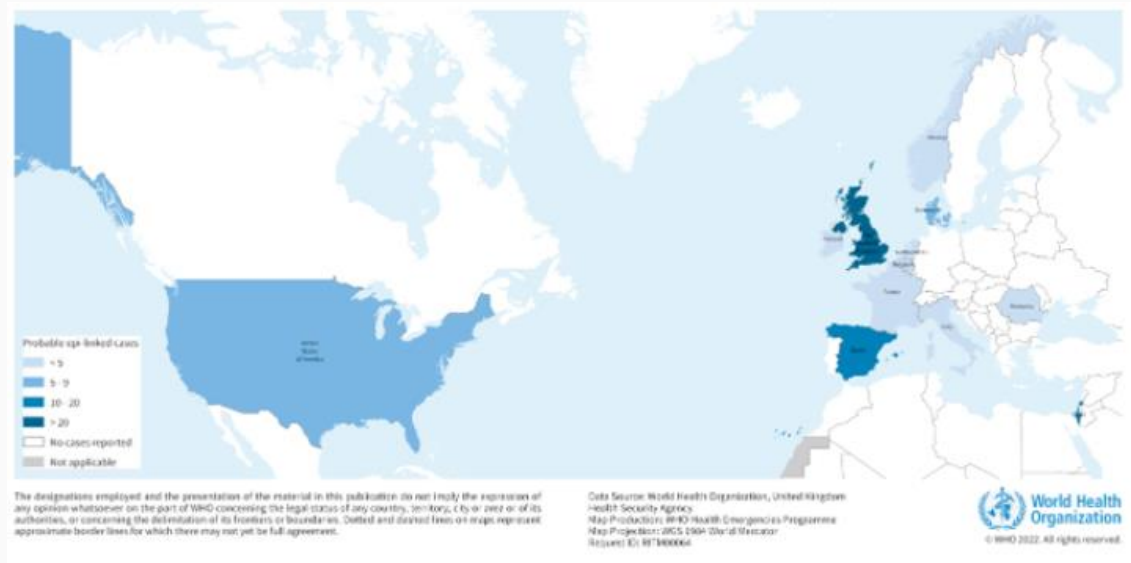
The UK Health Security Agency (HAS) published guidance regarding the increased incidence of acute hepatitis of unknown aetiology on the 8th of April 2022. To access this guidance click [here](#).

The World Health Organisation (WHO) has subsequently (23 April 2022) reported multi-country acute severe hepatitis of unknown origin.
<https://www.who.int/emergencies/disease-outbreak-news/item/2022-DON376>

114 (67%) of the 169 cases have been reported in the UK, most other reports are from Europe (Spain 13, Italy 4, Ireland 5, France 2) there have also been reports of cases in USA (9) and Israel (12).

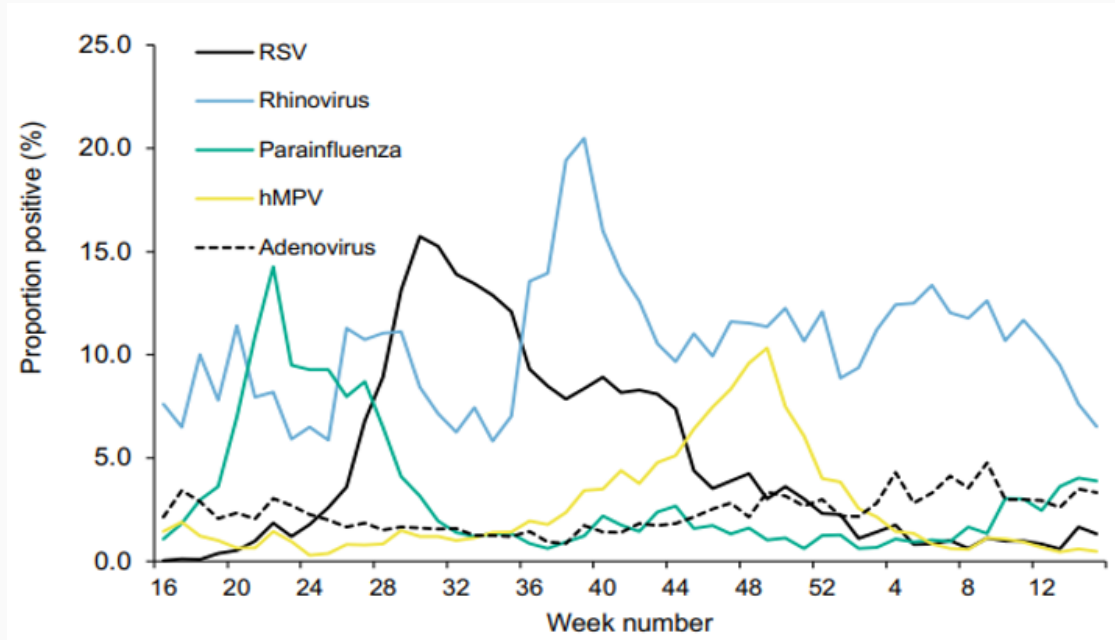
The age distribution is children <16 years of whom 10% have required liver transplantation. Children have presented with gastrointestinal symptoms, raised liver enzymes and jaundice. Adenovirus has been detected in 74 cases, SARs-COV-2 in 20 cases and a combination of both viruses in 19 cases.

Figure 1: Distribution of cases of acute severe hepatitis of unknown origin by country, as of 23 April 2022



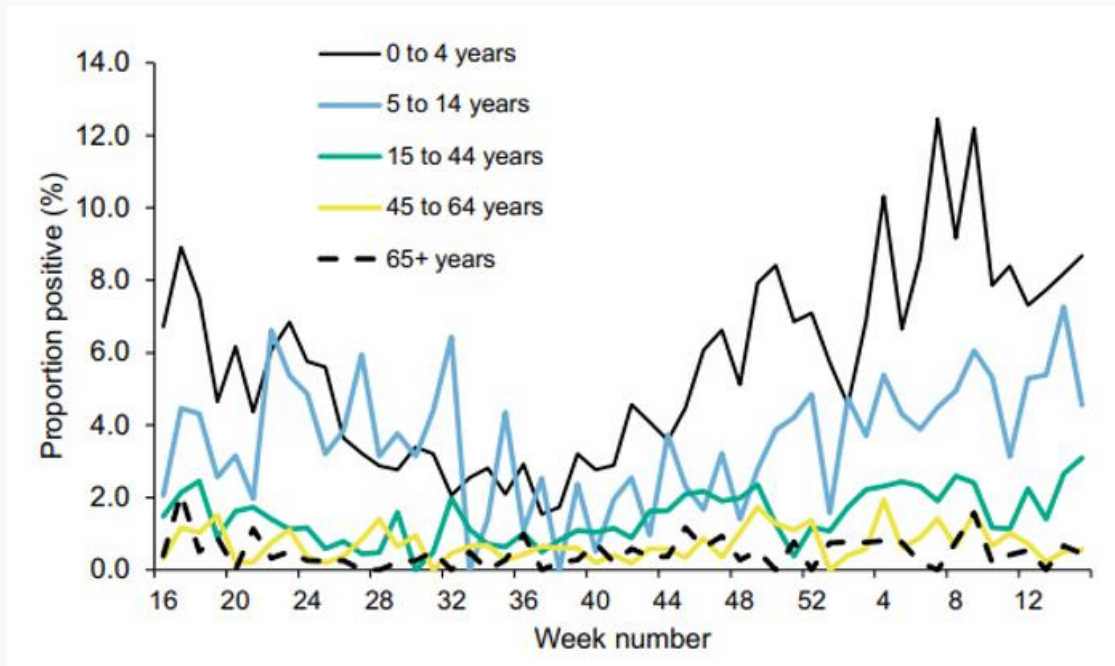
UK HSA Weekly positivity for respiratory viruses (week 16, 21/04/22)

The national viral surveillance screening demonstrated a fall in Rhinovirus and RSV rates with a rise in Parainfluenza and Adenovirus positivity rates from week 4 -8 onwards. Although the actual rates of Adenovirus are still low with only 3.3% positivity.



UK HSA Weekly positivity for adenovirus by age

In particular higher adenovirus positivity rates have been noted in children <14 years since week 4 of this year. This was highest in the Children <4 years with 8.7% of respiratory samples positive for adenovirus.





Join us on Whatsapp!



Want an easy way to keep up to date with STPN events and news but without all of the chit chat? Then join our whatsapp group by clicking this link - <https://chat.whatsapp.com/FjbGTLWoTWp0hv7JXZSjRZ>

STPN education and resources

Webinar focused on Transition

Look out for details of our upcoming webinar on transition from paediatric to adult services on Friday 25 June 25 (AM). This interactive meeting will update you on the National Framework, recommendations and tools to assist clinicians and organisations to develop their transition pathways, present a selection of examples of good practice and join a discussion on how the STPN could support services and organisations to implement improvement.

Thursday 12 May 13:00 – 14:00

STPN Grand Round – Paediatric Palliative Care

[Click here to join the meeting](#)

Dr Ella Aidoo, Consultant in paediatric palliative medicine, and Megan Watkins, Clinical Nurse Specialist in paediatric palliative care, present an overview of paediatric palliative care and when and how to refer patients to the service. They will also share their experiences of caring for children with T13 and T18 and how to better support these families.

For details of upcoming grand rounds and recordings of previous ones visit this page - <https://stpn.uk/grandround>

STPN Network Call

Tuesday 3 May 14:00 – 15:00

Join us for our monthly network call. This meeting is open for all to join to hear about the latest work of the STPN, get updates on surge and also provides an opportunity for you to ask for advice and support from your colleagues and peers across the Network. To join the meeting click [here](#).

SE CYP Clinical Forum - Workforce

Monday 9 May 13:00 to 15:00

The purpose of this meeting is to bring together all clinicians across the SE region who care for children to develop a community of practice, shared learning and insight and to provide opportunities to clinicians to develop their networks. All colleagues from primary care, secondary care, tertiary care and more are welcome! This is open to medics, Nurses, AHPs and anyone else who works in the health pathway of the child.

Please share with all of your colleagues, everyone is welcome!

For more information on how to join this session email england.SECYP@nhs.net

Useful resources to share

PIMS-TS Referrals

The growing experience in the care of PIMS-TS has resulted in a massive reduction in case numbers referred to the daily MDT, so this is now being stood down and replaced with a new pathway outlined in a new referral form which can be found here – insert link. This replaces the previous PIMS-TS referral form and can be used to refer for KD/PIMS-TS RAS echo appointments and for first follow up at 2 weeks.

If things don't work, we can tweak and improve!

Paediatric Advanced Clinical Assessment Course (EL-PACA)

Are you a CNS running nurse led clinics? This could be just what you are looking for.

<https://www.eventbrite.co.uk/e/evelina-london-paediatric-advanced-clinical-assessment-course-el-paca-tickets-291289162727>



Our mailing address is:

england.stpn@nhs.net

Network Manager:

Sally Watts

07918 338799

Want to change how you receive these emails?
You can [update your preferences](#) or [unsubscribe from this list](#).

This email was sent to [<<Email Address>>](mailto:)

[why did I get this?](#) [unsubscribe from this list](#) [update subscription preferences](#)

South Thames Paediatric Network · Becket House · Lambeth Palace Road · London, SE1 7EU · United Kingdom

