

## **December 2022 Network Update**

**Welcome to our monthly Network Newsletter, which includes our latest information and updates, as well as resources available to support local planning and provision of clinical care. Don't forget to take a look at our website [www.stpn.uk](http://www.stpn.uk) for more detailed information.**



**The STPN would like to thank you and your teams for all your hard work during 2022. It has been a pleasure working with you all. We hope you stay healthy and have time to rest and recharge over the holiday period.**



### **Winter Surge 2022 Resources**

Teams within the STPN have created and delivered webinars to stabilise and manage critically unwell children in the network.

There are two webinars delivered one the 7th December focusing on airway management for anaesthetists and the second for paediatricians on the 13th December.

These webinars cover the management of children requiring intubation and ventilation, cardiovascular management.

To access these webinar recordings, please press [here](#).

### **STPN Dashboard and Data**

Figure 1 and 2 reflect the anticipated increase in seasonal activity. This increased occupancy of general and PICU beds has been due to a combination of respiratory viruses (predominantly RSV and influenza) and increased level of invasive group A strep infections in children < 10 years of age. This is supported by national data which can be accessed through the HAS reports, links below.

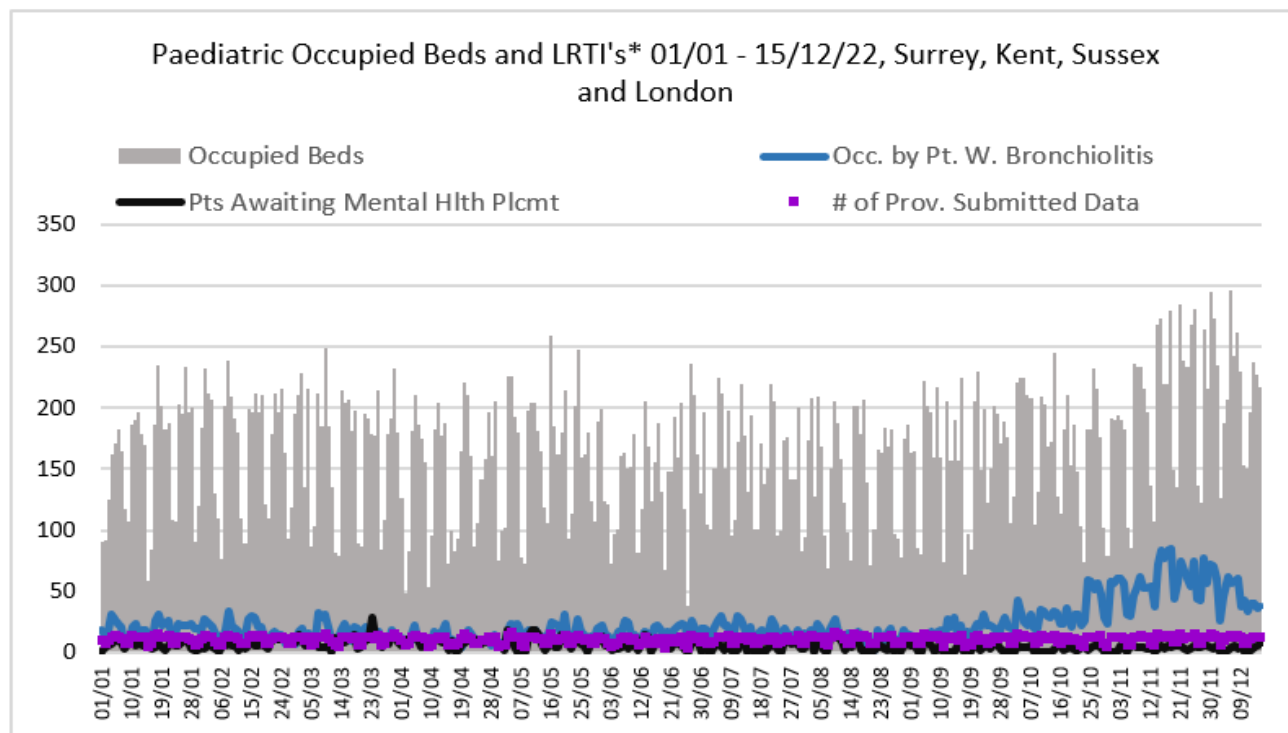
The latest HSA report is week 50

[https://assets.publishing.service.gov.uk/government/uploads/system/uploads/attachment\\_data/file/1124937/Weekly\\_Flu\\_and\\_COVID-19\\_report\\_w50.pdf](https://assets.publishing.service.gov.uk/government/uploads/system/uploads/attachment_data/file/1124937/Weekly_Flu_and_COVID-19_report_w50.pdf)

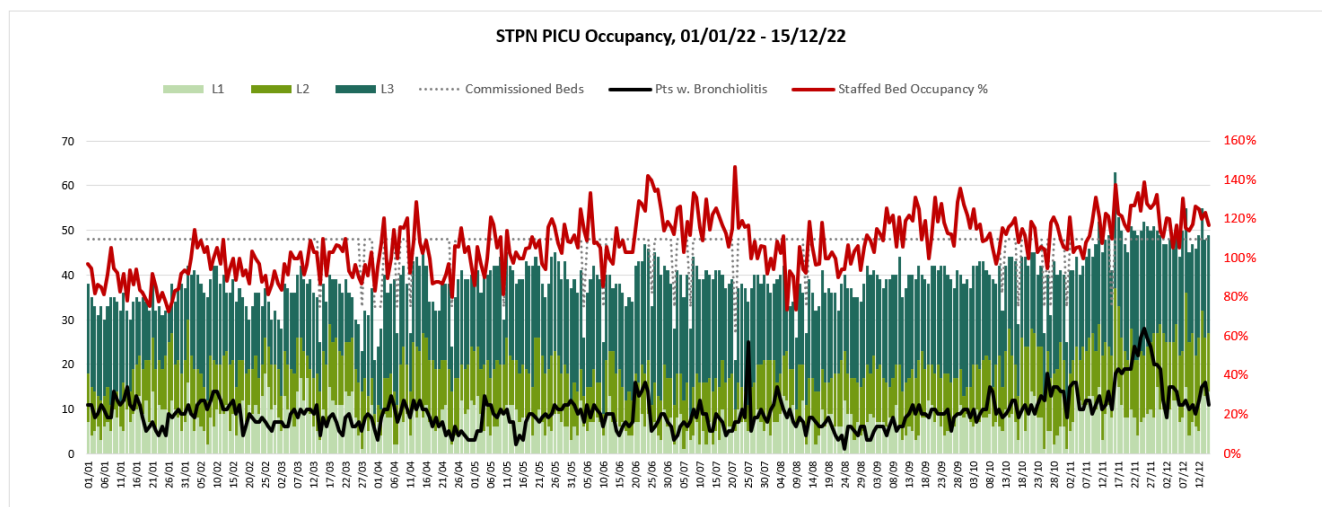
Group A strep infections update :

<https://www.gov.uk/government/publications/group-a-streptococcal-infections-activity-during-the-2022-to-2023-season/group-a-streptococcal-infections-second-update-on-seasonal-activity-in-england-2022-to-2023>

**Figure 1: General Paediatric Beds occupied (January – December 2022)**



**Figure 2: PICU beds occupied (January – December 2022)**



The full UK Health Security agency weekly report is available using the link: [https://assets.publishing.service.gov.uk/government/uploads/system/uploads/attachment\\_data/file/112388/Weekly\\_Flu\\_and\\_COVID-19\\_report\\_w42.pdf](https://assets.publishing.service.gov.uk/government/uploads/system/uploads/attachment_data/file/112388/Weekly_Flu_and_COVID-19_report_w42.pdf)

## Surgery In Children

New anaesthetic preparation material from the Royal College of Anaesthetists in the form of a Beano comic. 'Dennis has an anaesthetic' helps children understand what it's like to have a general anaesthetic, using familiar *Beano* characters to help reduce any anxiety they may have about surgery.

<https://www.rcoa.ac.uk/dennis-has-anaesthetic>



### **GIRFT Paediatric General Surgery and Urology Data Packs**

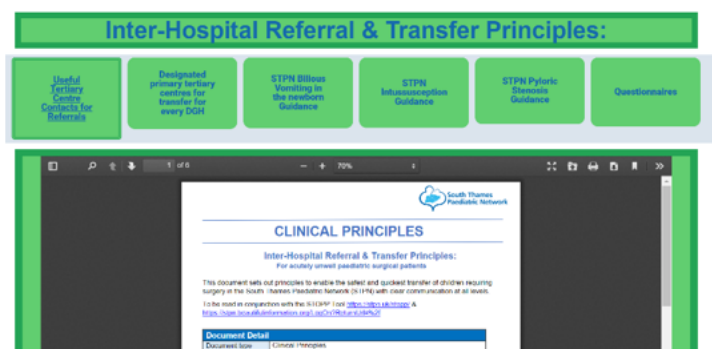
Thank you for your feedback following the data packs that we distributed to each Trust. The information has provoked some interesting thoughts, and we can see that a lot of work is going into making improvements in pathways of care for children undergoing surgery. We have been able to select examples of good practise from your responses to share with the National GIRFT team.

### **General Surgery: Assessment against Getting It Right First Time (GIRFT) Standards**

We have produced data packs to help each Trust to review how they are doing in meeting the recommendations from the General Surgery and Urology GIRFT Report. They've been sent to all paediatric leads and your surgical colleagues. Please take time to look at them, and feedback to us.

### **Transferring a child for a surgical assessment or procedure?**

Please draw the **Inter-Hospital Transfer Guideline** to the attention of your teams <https://stpn.uk/inter-hospital-transfer-guideline/> when transferring or receiving patients, particularly to your ED, Paediatric and Surgical trainees. These guidelines have been drawn up to prioritize patient safety and strive for the best patient outcomes.



Guides time frames for which input is required for different surgical conditions

Outlines which are the designated primary tertiary centres for each DGH, with contact numbers

Outlines the process of referral, acceptance, admission and repatriation

Please also continue to use, and highlight the value of the **STOPP Tool**

- A multidisciplinary and systematic approach to assessing the child prior to transferring them is known to improve the safety of the transfer.
- Triggers are identified and a clinical plan made.
- Identifies the transfer category (ward level, or level 1-3 critical care) and the staff required.

## Epilepsy



Following the appointments to our 3 clinical lead posts, Chinwe Ude, Elaine Hughes and Florence Kennard, we are keen to know more about your local epilepsy service so we can support the development of Epilepsy services across South Thames.

Therefore, we have formed a brief Epilepsy Survey for all providers to complete which will allow us to benchmark standards, analyse demand and capacity and form measurable outcomes for improvements. With the help and guidance from the Special Interest Paediatric Epilepsy Group (South West) and the South East Thames Paediatric,

Epilepsy Group, we have been able to send the survey link to the appropriate Epilepsy leads from each service to provide the data requested.

Depending on the quick provision of answers, we intend to collate, analyse and feedback the information by the end of January 2023 and would also like to arrange to visit epilepsy services to find out more about the challenges you face and identify opportunities of working together.

If you haven't already heard from us with regards to your epilepsy service, please do get in touch via [sara.mahjabin@gstt.nhs.uk](mailto:sara.mahjabin@gstt.nhs.uk).

---

## **STPN education**

*Always learning together*

## **Education**

We have created resources that are easy to be accessible which includes LTV resources and Education platforms, please click here to load poster.

[Education Working Group](#)  
[Education Resources](#)

## **Adolescent Health & Transition**





We hosted The Burdett Trusts Introduction to QI for Transition Services Webinar on the 29<sup>th</sup> of November and it was well attended and received. Stella and Nigel from the Burdett Trust gave an overview of what the QI process will involve for the development of healthcare Transition services.

At the end of the webinar, following a Slido poll, we found that Wednesday and Tuesday afternoon were the best time for future QI sessions for most attendees, so we will be alternating between those two days of the week.

The next session is on key national documents and the transition project plan and will be on Wednesday 25<sup>th</sup> January 15:30-17:00. The future dates are as follows and will be sent out as a calendar invite soon to those who have expressed an interest:

Session 3	Stakeholder Analysis	<b>Tuesday 21<sup>st</sup> February 2023 15:30-17:00</b>
Session 4	Diagnostic / Solution Design	<b>Wednesday 22<sup>nd</sup> March 2023 15:30-17:00</b>
Session 5	Implementation	<b>Tuesday 25<sup>th</sup> April 2023 15:30-17:00</b>
Session 6	Sustainability	<b>Wednesday 17<sup>th</sup> May 2023 15:30-17:00</b>

These QI sessions are open to both Paediatric and Adult services and we encourage that your colleagues from either are forwarded the invitation.

If you have not already been added to the diary invite on the 25<sup>th</sup> January and would like to be involved please contact [sara.mahjabin@gstt.nhs.uk](mailto:sara.mahjabin@gstt.nhs.uk).

## **Leadership, Management and Philosophy in The NHS**

### **Course Learning Outcomes**

- Increased self-awareness and confidence
- Increased improved leadership skills
- Increased willingness to challenge concepts QI, Change etc
- Greater understanding of the network (s') role and scope

### **Webinar series title**

1. 17th January: Leaders vs Managers.
2. 21st February: What is safe practice? Health systems from around the world. What is the ICB?
3. 21st March: Quality Improvement .. true or false

<https://www.eventbrite.co.uk/e/leadership-management-and-philosophy-in-the-nhs-tickets-428513825387>

### **Surgical Masterclass**

These masterclasses will give you an insight into common surgical and orthopaedic conditions and the associated complications and care pathways. It will consist of a combination of live and pre-recorded lectures, interactive discussions, Q&A sessions and case studies.

You can attend one or all of the days.



## **Long Term Ventilation – Study Days**

As part of the skills implementation role the STPN is able to support and provide LTV education across the network's acute hospitals, both DGHs and Tertiary Centres.

The training has no charge and will be delivered by LTV experts directly in your hospital through skills workshops & scenarios, complimented with resources for ongoing education.

We have run the first two dates with Lewisham and Greenwich Trust, with fantastic feedback and improved confidence. We are looking forward to returning for day two in October, and our first dates with Croydon Healthcare, Kingston Hospital and East Kent Hospitals in the coming months.

Please email [emma.whitcombe@gstt.nhs.uk](mailto:emma.whitcombe@gstt.nhs.uk) for further information and to book training days.

A link to current LTV training and resources which is updated regularly: <https://stpn.uk/ltvedandresources/>

We are currently reviewing the education that STRS offers to nurses in our regional district general hospitals and we would value the input of your nurses. We are planning three workshops to allow Band clinical 5 & 6 to help us shape our new programme.

I would be grateful if you would pass on this opportunity to your team.

## **Help Shape STRS Nurse Education**

Are you a Band 5 or 6 nurse in a South Thames DGH? We want to hear from you!

Help change the way the South Thames Retrieval Service delivers education to nurses in DGHs

We want to review the education we deliver and how we deliver it to Band 5 and 6 nurses in our region. Our aim is to ensure you receive the education you need in a way that best suits you and your needs.



**SCAN ME**

**Sign up to join our one of our workshops**



## Long Term Ventilation (LTV)

How can we help you feel more confident using ventilators? Download and put up our LTV Hub poster on your wards!

To access please click on link <https://stpn.uk/ltv-hub/> or poster below.

**North Thames Paediatric Network**  
Connecting paediatric services

**South Thames Paediatric Network**

# LTV HUB

V3: October 2022—Information was correct at time of printing.  
For review: April 2023. Some equipment and policies differ slightly between LTV centres, please contact your local LTV Centre for more information and ensure that you are working to local policy.

Access more Resources, Videos, E-learning and Competency Documents at LTV Central Team: <https://ltv.services/>

Access Complex Discharge Guidance and Tools (developed in collaboration with WellChild and PPLTVG )  
<https://www.wellchild.org.uk/10-principles-for-complex-discharge>

### MEDICAL EQUIPMENT USER GUIDES AND TROUBLESHOOTING

<a href="#">Astral 150</a>	<a href="#">Trilogy 100</a>	<a href="#">Nippy Junior +</a>	<a href="#">Stellar 100 &amp; 150</a>	<a href="#">AirSense 10</a>

### CIRCUIT SET UP

<a href="#">Astral 150</a>	<a href="#">Trilogy 100</a>	<a href="#">Nippy Junior +</a>	<a href="#">Stellar 100 &amp; 150</a>	<a href="#">AirSense 10</a>

### EDUCATION RESOURCES - VIDEOS

<a href="#">Respiratory Assessment</a>	<a href="#">Mask fitting for NIV</a>	<a href="#">Pressure sores &amp; NIV</a>	<a href="#">NIV Equipment troubleshooting</a>	<a href="#">Suctioning a tracheostomy</a>
<a href="#">Partially blocked Tracheostomy</a>	<a href="#">Blocked Tracheostomy</a>	<a href="#">BLS Tracheostomy</a>	<a href="#">Nippy 4</a>	<a href="#">Trilogy EVO</a>

Please share this useful document created by the integrated LTV team and North Thames Paediatric Network on support available to families in relation to the cost of



living crisis.

To access please click on link below.

[https://stpn.uk/wp-content/uploads/2022/10/2022\\_October\\_Information-for-health-professionals-to-support-families-002.pdf](https://stpn.uk/wp-content/uploads/2022/10/2022_October_Information-for-health-professionals-to-support-families-002.pdf)

Also refer to the [iLTV webinar on income maximisation](#) (**always available** – uploaded on Youtube) – this was uploaded in April, so prior to the CoL crisis, but it is aimed at professionals to support with raising awareness of the importance of getting families supported with income maximisation and how to signpost families towards support– namely getting benefits advice or accessing grants. The latter half of the video (23 mins onward) shows how to use the Turn2us grants search tool referenced in the support for families document, to maximise results (use of filters for more relevant charities etc.,).

## Other Updates and information

London SCIC at Stanmore is organising a study- 'Introduction to Spinal Cord Injury in Children & Young People'.

Please see below poster for contact details to register, click here to view/download [study day time table](#).

The poster is for a study day titled 'Introduction to Spinal Cord Injury in Children & Young People'. It is organized by the London Spinal Cord Injury Centre (LSCIC) at the Royal National Orthopaedic Hospital (RNOH) NHS Trust. The event is scheduled for Thursday 12<sup>th</sup> January 2023, from 9.00am to 4.00pm. It is run by the Children & Young Persons Multi Disciplinary Team at the LSCIC. The venue is the Charles Lack Theatre, RNOH, Stanmore HA7 4LP. The poster features illustrations of a boy in a Superman costume and a girl in a Wonder Woman costume, both sitting in wheelchairs. A QR code is provided for further information. The text states there is no charge for the study day. Bookings should be made by contacting Cathy Godfrey, Outreach Administrator, on 0208 909 5121 or via email at [rnoh.lsciccypcns@nhs.net](mailto:rnoh.lsciccypcns@nhs.net).

London Spinal Cord Injury Centre

Royal National Orthopaedic Hospital NHS Trust

**Introduction to Spinal Cord Injury in Children & Young People**

Thursday 12<sup>th</sup> January 2023  
9.00am to 4.00pm

Run by the Children & Young Persons Multi Disciplinary Team  
London Spinal Cord Injury Centre (LSCIC)

**Venue**  
Charles Lack Theatre  
Royal National Orthopaedic Hospital  
Stanmore HA7 4LP

Please see our website for further information on how to attend:

[Study Day Time Table](#)

**There is no charge for this study day**

**Bookings:** Please contact Cathy Godfrey Outreach Administrator on 0208 909 5121 and the LSCIC CYP CNS outreach team on [rnoh.lsciccypcns@nhs.net](mailto:rnoh.lsciccypcns@nhs.net)

**St Georges Hospital enrolling patients in AstraZeneca Covid mAb study**

For children <18y with co-morbidities who are at risk of developing severe COVID. Used either as a prophylactic or as a treatment (mild COVID at home). The inc/exc criteria (on the attached)- doesn't matter if already had COVID vaccine (as long as not in previous 14 days). It's a Phase 1 PK study so does require a few blood tests & fairly close FU. [Click here for more information](#)

**Should you have any eligible patients please contact Cecilia Hultin/Natasha Thorn in the paed ID research team on: 02087252316**

---

Do you want to know what is happening more locally if you work in Kent, Surrey and Sussex? Further information can be found in the South East Region Children and Young People's Team Newsletter

<https://sway.office.com/OCawfIGFPIrHzQGO?ref=Link>

Kent & Medway ICS are the first system to be highlighted in the regular newsletter. Please do let the team know if you would like your system involved next month.

### ***How does the NHS in England work and how is it changing?***

The Kings Fund have produced this recording to provide more clarity on how the NHS is changing and more information about ICSs. Please share with your colleagues and Networks.

[https://www.kingsfund.org.uk/audio-video/how-does-nhs-in-england-work?utm\\_source=twitter&utm\\_medium=social](https://www.kingsfund.org.uk/audio-video/how-does-nhs-in-england-work?utm_source=twitter&utm_medium=social)

### ***NICE guideline on Diabetes (type 1 and type 2) in children and young people: diagnosis and management – periodontal disease***

NICE have now published this guidance. This can be accessed via this link

<https://www.nice.org.uk/guidance/NG18>

---



**Join us on Whatsapp!**



Want an easy way to keep up to date with STPN events and news but without all of the chit chat? Then join our whatsapp group by clicking this link - <https://chat.whatsapp.com/FjbGTLWoTWp0hv7JXZSjRZ>



---

**Our mailing address is:**

[england.stpn@nhs.net](mailto:england.stpn@nhs.net)

**Network Managers:**

Sally Watts and Harriet Ward

07918 338799 and 07342 068632

Want to change how you receive these emails?

You can [update your preferences](#) or [unsubscribe from this list](#).