



June 2022 Network Update

Welcome to our monthly Network Newsletter which includes the latest information and resources that are available to support local planning and provision of clinical care. Don't forget to take a look at our website www.stpn.uk for more detailed information.

Staff update

The team are all over the moon to welcome back Harriet Ward from her maternity leave. Harriet is now mum to two gorgeous little girls called Ruth and Josie, who have just turned 1. Harriet will return to her role as **Network Manager** on a part-time basis, working 3 days a week. She will share her role with Sally Watts.





Laura Snow has joined us as the **Lead Nurse for Surgery in Children** for the Network. She is familiar with the hospitals across the region, having worked with STRS for many years. Laura is particularly keen to support nurses, and the wider MDT, looking after children on any surgical journey and hopes to share learning between specialist services and the rest of the network.

There is still more recruitment happening within STPN with new posts to be announced shortly. I'm sure you'll agree that the team has grown quite a bit!

Meet the team! 

 Harriet Ward Network Manager	 Marilyn McDougall Clinical Director	 Sally Watts Network Manager		
 Teresa Davey Network Coordinator	 Sarah Fleet Clinical Educator	 Miriam Cabib Senior Project Manager	 Sara Mahjabin Junior Project Manager	 David Taylor Data Analyst
Critical Care ODN	Inc LTV	Surgery in Children ODN	Gastroenterology ODN	
 Sachin Patil Clinical Lead	 Richard Chavasse Clinical Lead	 Feilim Murphy Clinical Lead	 Sam Kalamchi Clinical Lead	
 Stacey Bedford Nursing Lead	 Emma Whitcombe Reg'I Lead for LTV Skills Programme (starts June 2022)	 Laura Snow Nursing Lead	 Mohamed Mutalib Clinical Lead	

New posts tba:
 Clinical Educator for Surgery
 AHP Clinical Lead for TH Rehabilitation Programme
 Project Coordinator for TH Rehabilitation Programme



STPN Annual Report 2021/2022



The 2021/22 annual report celebrates successes across the all of Operational Delivery Networks (ODNs), Networks and Working Groups which constitute the STPN. The past year provided excellent opportunities to work together with colleagues in district general hospitals, tertiary centres, specialist services, community teams, integrated care systems and the mental health sector on improving patient care, data collection & analysis, education & training and governance. None of which would have been possible without support from colleagues throughout the region, thank you all! The report also describes STPN ambitions for the year ahead and plenty of opportunities to contribute to network development.

This annual report is not long and wordy, but filled with infographics to ensure that it is informative and to the point. Please do take the time to read the report and send us your comments.

Click [here](#) to access the report.

STPN Dashboard and Data

Figure 1 : General Paediatric Beds occupied (Jan – May 2022)

The downward trend of beds occupied in April has not continued in May. The maximum number of beds occupied was 241. There has been a slight increase in the number of beds occupied by children with lower respiratory tract infections (blue line) since mid-May. The number of children awaiting mental health placement (black line) has remained low.

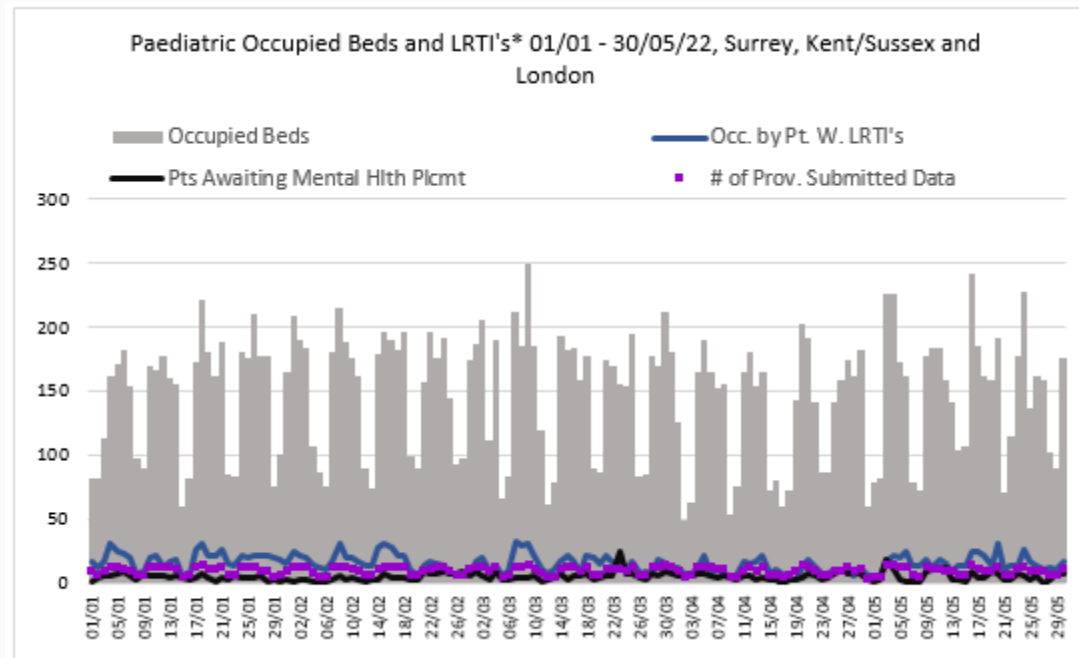


Figure 2: Paediatric Critical Care beds occupied (Jan – May 2022)

The number of occupied PCC beds in the region has increased in May compared to the preceding couple of months with occupancy exceeding 100% staffed capacity in PCC for most of the month.

There does also appear to be a slightly upward trend in the number of beds occupied by children with lower respiratory tract infections.

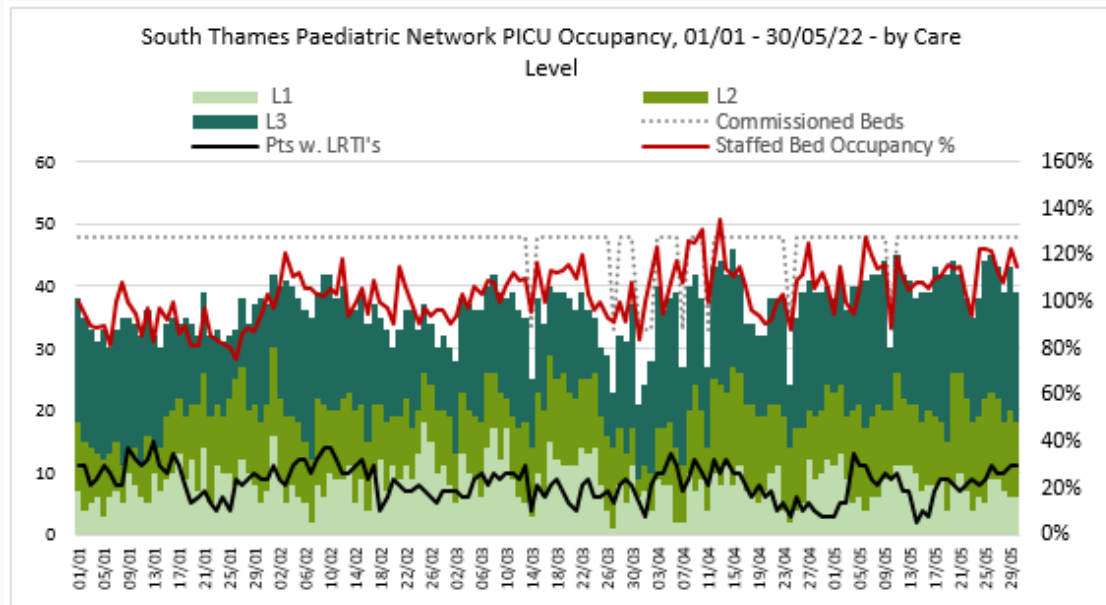


Figure 3: South Thames Retrieval Service calls and transfers (Jan – May 2022)

A total of 172 calls were received by STRS in May of which 68 (40%) resulted in retrievals. This is a slight increase in the numbers of calls and retrievals compared to April. The majority (n= 196, 57%) of the STRS transfers have taken place in the day time.

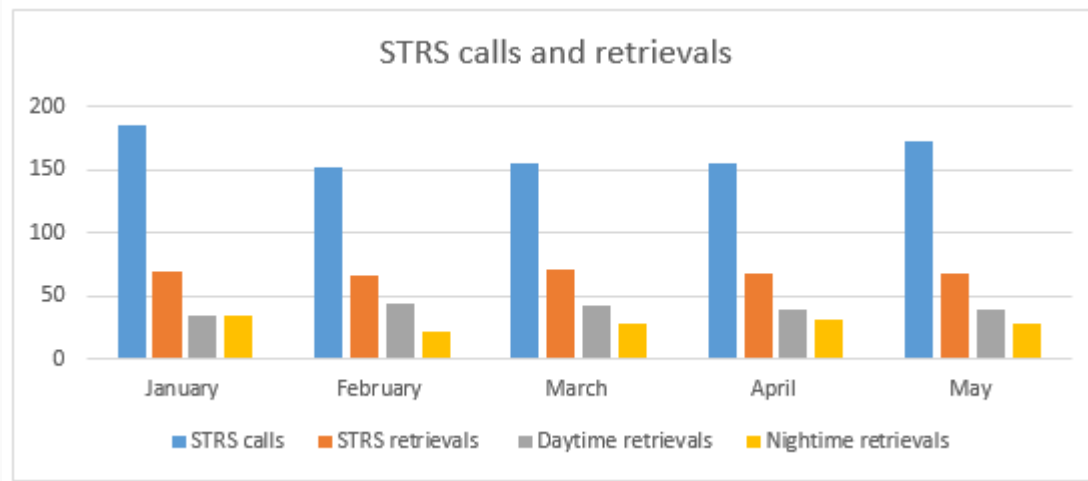


Figure 5: Weekly positivity for RSV by age from week 23 UK HSA report

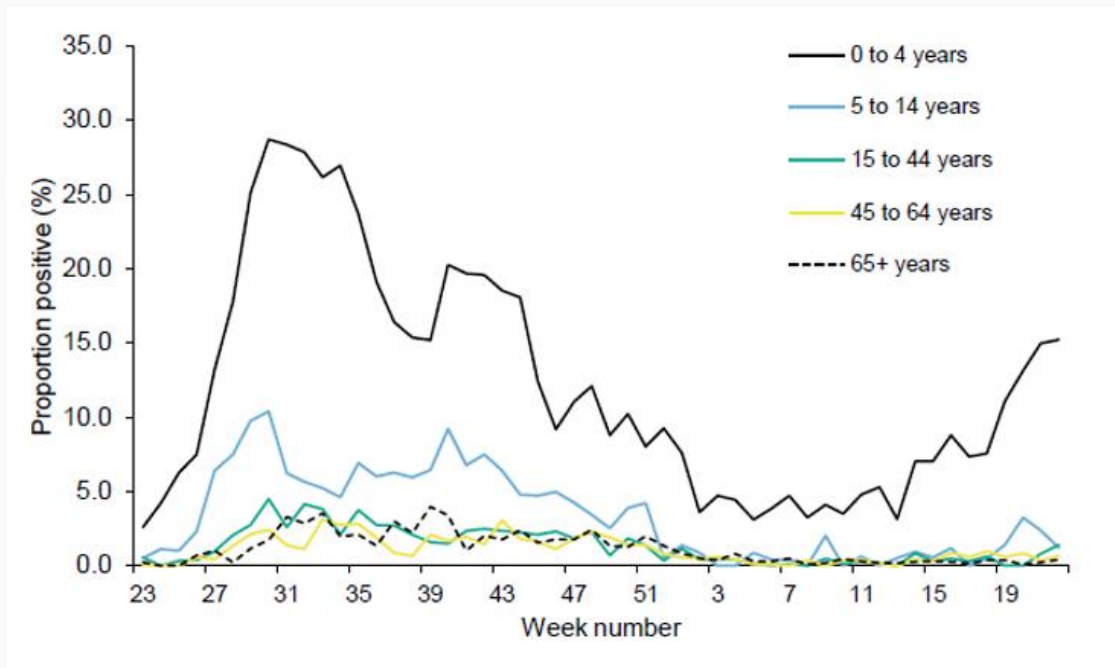
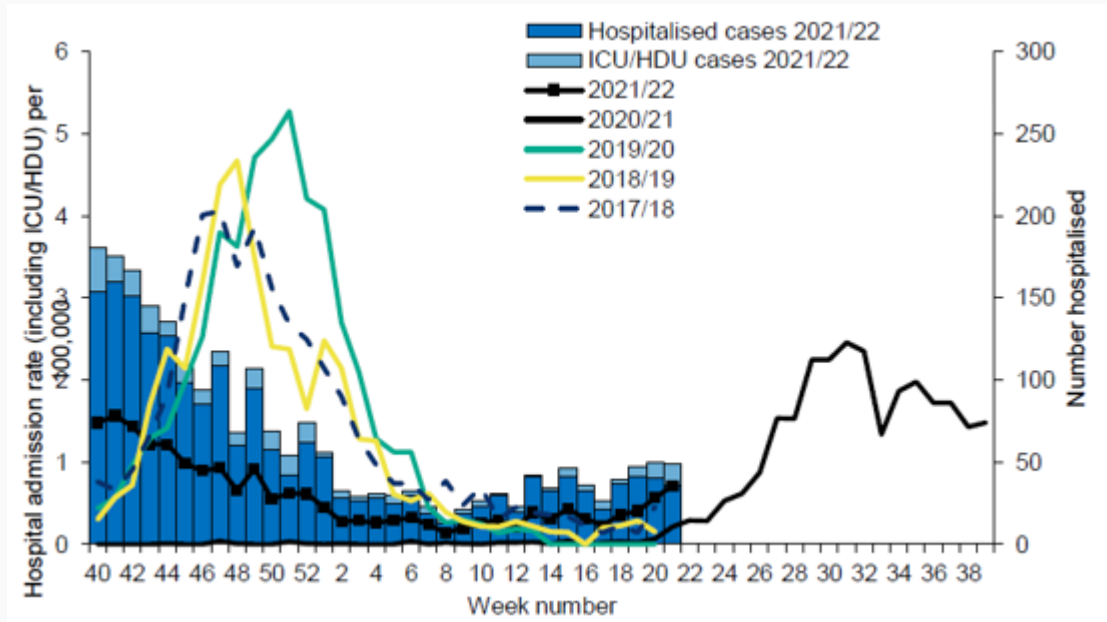


Figure 6: Weekly confirmed RSV rate per 100,000 population from Week 23 UK HSA report



 **Join us on Whatsapp!** 

Want an easy way to keep up to date with STPN events and news but without all of the chit chat? Then join our whatsapp group by clicking this link - <https://chat.whatsapp.com/FjbGTLWoTWP0hv7JXZSjRZ>

STPN education

Always learning together

We are now able to confirm what the monthly themes will be for the upcoming months. Keep an eye out for the updates, you can visit the page by following this link- <https://stpn.uk/always-learning-together/>

June: Sepsis in Children

July: Management of Appendicitis

**Watch this space for the launch of
“Always Learning Together at Lunch!!!”**

Friday 24 June 09:00 – 12:00

STPN Webinar - Getting started with transition



Getting started with transition

Friday 24 June 2022
09:00 - 12:00

Join us for this webinar exploring how we can improve developmentally appropriate health care for children and young people.



South Thames Paediatric Network
Transforming Healthcare for Children and Young People

During this interactive webinar you will

- ❖ Learn about the most up to date resources, frameworks and benchmarking tools
- ❖ Learn what has worked and not gone so well from Transition experts
- ❖ Hear from patients and their families
- ❖ Be able to share your ideas and challenges
- ❖ Have a say in how the STPN can support you, your service and organisation in improving transition care across the Network
- ❖ Make a commitment to get started, or keep going and join in the discussion

To register your place click this link -

<https://www.eventbrite.co.uk/e/getting-started-with-transition-tickets-339842868167?aff=affiliate1>

Wednesday 20 July 09:00 – 15:00

CVAD Train the Trainer Study Course

STPN, in collaboration with The Royal Marsden, are delivering a two part CVAD Train the Trainer Course. To find out more and register your place follow the link -

<https://www.eventbrite.co.uk/e/334611129897>

STPN Resources

STPN Adenotonsillectomy/Tonsillectomy Pathway

The Network's Surgery in Children ODN has produced this document to provide a reference for what is considered best practice for Adenotonsillectomies and Tonsillectomies across the South Thames region. It is best practice guidance only and is subject to clinical discretion. All tertiary & secondary centre staff involved in the pathways for children (under 16 years) undergoing adenotonsillectomy/tonsillectomy procedures should consider this pathway.

To access the pathway click [here](#).

Network updates and information

RCPCH Guidance relating to Monkeypox outbreak 2022

This guideline covers the pathway and clinical considerations in the care of a child or young person (CYP) with suspected Monkeypox and a CYP contact of a confirmed case of Monkeypox. To access the document click [here](#).

Monday 20 June 12:30 - 14:00

Whole Systems Children's Healthy Weight Webinar

This event is targeted at NHS, public health, local authority and academic leaders and is a valuable opportunity to share learning across London and meet colleagues who can help you progress this agenda within your local system.

Agenda will include:

- Lambeth and LEAP; their experience promoting healthier weight
- Birmingham's journey to becoming a Healthy Food City
- Superzones
- Child weight management services

To register your place click this link -

<https://www.eventbrite.co.uk/e/whole-systems-childrens-healthy-weight-webinar-tickets-352492082307>

Clinical Leadership Roles in Specialised Services

Recruitment is open for clinical leadership roles in Specialised Commissioning, mainly (but not exclusively) roles in the new Clinical Reference Group structure.

We are seeking individuals from a broad range of clinical disciplines and backgrounds, who can bring fresh thinking and innovative ideas, informed by recent experience of clinical delivery in NHS Specialised healthcare.

Whilst prior national experience is not required, we want individuals who are keen and ready to take on these roles. You will be able to

demonstrate leadership of change and a commitment to working collaboratively.

Find out more information about the roles on offer and how to apply here: <https://www.england.nhs.uk/commissioning/spec-services/npc-crg/clinical-leadership-review/>

The closing date for applications is **27 June 2022**

REACH Service

Do you have children and young people with **hemiparesis** in your area?

Are you're interested in providing them with more intensive, **evidence** informed upper limb rehabilitation?

If so please join us on **13th July** for our upcoming webinar where the **Evelina REACH Rehabilitation Service** will present an overview of current best practice for upper-limb interventions for children and young people with hemiparesis. As well as when and how to refer patients to our service.

- The **Evelina REACH Rehabilitation service** provides individualised, evidence-based outpatient rehabilitation.
- We offer **activity-based goal-directed programmes targeting arm and hand function** for infants, children and young people with hemiparesis within the boroughs of south London, Kent, Surrey and Sussex.
- Our programmes are delivered in partnership with young people, parents/carers and **community-based therapists**.

For more information and how to refer go to www.evelinalondon.nhs.uk/reach or feel free to reach us on, Tel: 020 7188 9427 Mob: 07717 680 883 or evelinareach@gstt.nhs.uk

Clinical Educator - Snow Leopard LTV

The Evelina has a secondment position for Clinical Educator on Snow Leopard.

It is a great opportunity to expand your skills and knowledge and to try it for one year.

For further details about the poster and to apply click [here](#).

The vacancy is advertised internally/externally and the **closing date is 15 June 2022**

Please share with anyone who may be interested!!!

Pathway to Children's Nursing - online education event

The Pathway to Children's Nursing cohort consists of five blocks of study and two optional enrichment days (dependent on COVID restrictions), enabling you to experience and consolidate your understanding of the 'well child'.

As part of this cohort, you will have access to a wide range of learning activities and resources hosted on Ocean2Sky.uk.

Topics Covered

- The well child
- Paediatric A+P and assessment
- Legal and ethical considerations in paediatric nursing
- CAMHS and disorders of development
- Communication and managing the deteriorating child

For more information on this course and to register your place, click [here](#).



Our mailing address is:

england.stpn@nhs.net

Network Managers:

Sally Watts and Harriet Ward

07918 338799 and 07342 068632

Want to change how you receive these emails?

You can [update your preferences](#) or [unsubscribe from this list](#).

This email was sent to [<<Email Address>>](mailto:)

[why did I get this?](#) [unsubscribe from this list](#) [update subscription preferences](#)

South Thames Paediatric Network · Becket House · Lambeth Palace Road · London, SE1 7EU · United Kingdom

